



Sir John Hunt



Whitleigh  
Community Primary  
and  
Sir John Hunt  
Federation

# Child Protection and Safeguarding Policy

<b>Approved by:</b>	WPSJH Federation	<b>Date:</b> 03/03/21
<b>Last reviewed on:</b>	13 September 2021	
<b>Next review due by:</b>	March 2022	

## Contents

Important contacts .....	3
1. Aims.....	4
2. Legislation and statutory guidance.....	4
3. Definitions.....	4
4. Equality statement.....	5
5. Roles and responsibilities.....	5
6. Confidentiality .....	7
7. Recognising abuse and taking action .....	7
8. Notifying parents .....	14
9. Pupils with special educational needs and disabilities .....	14
10. Pupils with a social worker .....	14
11. Looked-after and previously looked-after children .....	15
12. Online Safety and computer use .....	15
13. Remote Learning.....	18
14. Mobile phones and cameras .....	19
15. Complaints and concerns about school safeguarding policies .....	20
16. Record-keeping .....	20
17. Training.....	20
18. Monitoring arrangements .....	21
19. Links with other policies .....	21
Appendix 1: types of abuse .....	22
Appendix 2: safer recruitment and DBS checks – policy and procedures .....	23
Appendix 3: allegations of abuse made against staff.....	25
Appendix 4: specific safeguarding issues .....	29

## Important contacts

WHITLEIGH PRIMARY	NAME	CONTACT DETAILS
Designated safeguarding lead (DSL)	Mr Gavin Summerfield (Head Teacher)	01752 706383 <a href="mailto:gavin.summerfield@whiteleighprimary.co.uk">gavin.summerfield@whiteleighprimary.co.uk</a>
Deputy DSLs	Mrs Jo Burke Mrs Rhiannon Roberts Ms. Ali Harvard Mrs Sam Seth-Weyda Miss Nikki Kelleher Mrs Sandra Cooper Mis Amy Tidy Mr Ryan Howe Mrs Laura Pimlott	01752 706383 01752 706383 01752 706383 01752 706383 01752 706383 01752 706383 01752 706383 01752 706383 01752 706383
Chair of Governors	Mr John Bale	<a href="mailto:clerkwpsjh@SirJohnHunt.onmicrosoft.com">clerkwpsjh@SirJohnHunt.onmicrosoft.com</a>
Nominated Safeguarding Governors	Mr John Bale Mr Roger Galloway	<a href="mailto:clerkwpsjh@SirJohnHunt.onmicrosoft.com">clerkwpsjh@SirJohnHunt.onmicrosoft.com</a>
Designated Teachers for Looked After Children	Mr Gavin Summerfield (Head Teacher) Mrs Ali Havard	01752 706383 01752 706383
SIR JOHN HUNT	NAME	CONTACT DETAILS
Designated safeguarding lead (DSL)	Mr Oliver Marner (Assistant Principal)	01752 201020 Ext. 205 / 07966 235 690 <a href="mailto:o.marner@sjhcsc.co.uk">o.marner@sjhcsc.co.uk</a>
Deputy DSL	Mrs Christina Couling Mr Christian Harling Miss Megan Bloomfield Mrs Nicki Davies Miss Clare Minchella	01752 201020 Ext. 301 01752 201020 Ext. 302 01752 201020 Ext. 304 01752 201020 Ext. 306 01752 201020 Ext. 312
Chair of Governors	Mr John Bale	<a href="mailto:clerkwpsjh@SirJohnHunt.onmicrosoft.com">clerkwpsjh@SirJohnHunt.onmicrosoft.com</a>
Nominated Safeguarding Governor	Mr John Bale Mr Roger Galloway	<a href="mailto:clerkwpsjh@SirJohnHunt.onmicrosoft.com">clerkwpsjh@SirJohnHunt.onmicrosoft.com</a>
Designated Teacher for Looked After Children	Mr Oliver Marner (Assistant Principal)	01752 201020 Ext. 205 07966 235 690
OTHER	NAME	CONTACT DETAILS
Plymouth Gateway – Children’s Social Care		01752 668000 – Option 1 <a href="mailto:gateway@plymouth.gov.uk">gateway@plymouth.gov.uk</a>
Plymouth Social Care ‘out of hours’ team		01752 668000 Select Children’s Services – Option 1
Local authority designated officer (LADO)	Jane Parmenter	01752 304 769 07866 892 851
PCC Inclusion Manager	Isabelle Morgan	01752 307471
NSPCC Helpline		0808 800 5000

Channel helpline		020 7340 7264
------------------	--	---------------

## 1. Aims

The schools aim are to ensure that:

- Appropriate action is taken in a timely manner to safeguard and promote children's welfare
- All staff are aware of their statutory responsibilities with respect to safeguarding
- Staff are properly training in recognising and reporting safeguarding issues annually and also receive online e-safety training.

## 2. Legislation and statutory guidance

This policy is based on the Department for Education's statutory guidance [Keeping Children Safe in Education \(2021\)](#) and [Working Together to Safeguard Children \(2018\)](#), and the [Governance Handbook](#). We comply with this guidance and the arrangements agreed and published by our 3 local safeguarding partners.

This policy is also based on the following legislation:

- Section 175 of the [Education Act 2002](#), which places a duty on schools and local authorities to safeguard and promote the welfare of pupils
- [The School Staffing \(England\) Regulations 2009](#), which set out what must be recorded on the single central record and the requirement for at least one person conducting an interview to be trained in safer recruitment techniques
- [The Children Act 1989](#) (and [2004 amendment](#)), which provides a framework for the care and protection of children
- Section 5B(11) of the Female Genital Mutilation Act 2003, as inserted by section 74 of the [Serious Crime Act 2015](#), which places a statutory duty on teachers to report to the police where they discover that female genital mutilation (FGM) appears to have been carried out on a girl under 18
- [Statutory guidance on FGM](#), which sets out responsibilities with regards to safeguarding and supporting girls affected by FGM
- [The Rehabilitation of Offenders Act 1974](#), which outlines when people with criminal convictions can work with children
- Schedule 4 of the [Safeguarding Vulnerable Groups Act 2006](#), which defines what 'regulated activity' is in relation to children
- [Statutory guidance on the Prevent duty](#), which explains schools' duties under the Counter-Terrorism and Security Act 2015 with respect to protecting people from the risk of radicalisation and extremism
- The [Childcare \(Disqualification\) and Childcare \(Early Years Provision Free of Charge\) \(Extended Entitlement\) \(Amendment\) Regulations 2018](#) (referred to in this policy as the "2018 Childcare Disqualification Regulations") and [Childcare Act 2006](#), which set out who is disqualified from working with children
- This policy also meets requirements relating to safeguarding and welfare in the [statutory framework for the Early Years Foundation Stage](#).
- [Review of sexual abuse in schools and colleges](#) (June 2021)
  - [Sexual violence and sexual harassment between children in schools and colleges](#) (September 2021)
  - [Behaviour and Discipline in Schools](#) (advice for schools)
  - [Children Missing Education](#) (advice for schools)
  - [Cyberbullying](#) (advice for schools)
  - [The Equality and Human Rights Commission](#) (provides advice on avoiding discrimination in a variety of educational contexts)
  - [Equality Act 2010](#) and [Public Sector Equality Duty](#) (advice for schools)

## 3. Definitions

**Safeguarding and promoting the welfare of children** means:

- Protecting children from maltreatment
  - Preventing impairment of children’s mental and physical health or development
  - Ensuring that children grow up in circumstances consistent with the provision of safe and effective care ➤
- Taking action to enable all children to have the best outcomes

**Child protection** is part of this definition and refers to activities undertaken to prevent children suffering, or being likely to suffer, significant harm.

**Abuse** is a form of maltreatment of a child and may involve inflicting harm or failing to act to prevent harm. Appendix 1 explains the different types of abuse.

**Neglect** is a form of abuse and is the persistent failure to meet a child’s basic physical and/or psychological needs, likely to result in the serious impairment of the child’s health or development. Appendix 1 defines neglect in more detail.

**Sexting** (also known as youth produced sexual imagery) is the sharing of sexual imagery (photos or videos) by children

**Children** includes everyone under the age of 18.

The following 3 **safeguarding partners** are identified in Keeping Children Safe in Education (2021) (and defined in the Children Act 2004, as amended by chapter 2 of the Children and Social Work Act 2017). They will make arrangements to work together to safeguard and promote the welfare of local children, including identifying and responding to their needs:

- The local authority (LA)
- A clinical commissioning group for an area within the LA
- The chief officer of police for a police area in the LA area

## 4. Equality statement

Some children have an increased risk of abuse, and additional barriers can exist for some children with respect to recognising or disclosing it. We are committed to anti-discriminatory practice and recognise children’s diverse circumstances. We ensure that all children have the same protection, regardless of any barriers they may face.

We give special consideration to children who:

- Have special educational needs (SEN) or disabilities (see section 9)
- Are young carers
- May experience discrimination due to their race, ethnicity, religion, gender identification or sexuality
- Have English as an additional language
- Are known to be living in difficult situations – for example, temporary accommodation or where there are issues such as substance abuse or domestic violence
- Are at risk of FGM, sexual exploitation, forced marriage, or radicalisation
- Are asylum seekers
- Are at risk due to either their own or a family member’s mental health needs ➤

Are looked after or previously looked after (see section 11)

## 5. Roles and responsibilities

The board of governors have ensured that safeguarding and child protection is **everyone’s** responsibility. This policy applies to all staff, volunteers and governors in the school and is consistent with the procedures of the 3 safeguarding partners. Our policy and procedures also apply to extended school and off-site activities.

## 5.1 All staff

All staff will read and understand part 1 and Annex A of the Department for Education's statutory safeguarding guidance, [Keeping Children Safe in Education](#) (2021) and that everybody who works in the setting understands their safeguarding responsibilities. This guidance is reviewed at least annually.

All staff will be aware of:

- › Our systems which support safeguarding, including this child protection and safeguarding policy, the staff code of conduct policy, the role and identity of the designated safeguarding leads (DSLs) and deputies, the behaviour policy, and the safeguarding response to children who go missing from education
- › The early help process and their role in it, including identifying emerging problems, liaising with the DSL, and sharing information with other professionals to support early identification and assessment
- › The process for making referrals to local authority children's social care and for statutory assessments that may follow a referral, including the role they might be expected to play
- › What to do if they identify a safeguarding issue or a child tells them they are being abused or neglected, including specific issues such as FGM, and how to maintain an appropriate level of confidentiality while liaising with relevant professionals
- › The signs of different types of abuse and neglect, as well as specific safeguarding issues, such as child sexual exploitation (CSE), indicators of being at risk from or involved with serious violent crime, FGM and radicalisation

Section 15 and appendix 4 of this policy outline in more detail how staff are supported to do this.

## 5.2 The designated safeguarding lead (DSL)

The DSLs are member of the senior leadership teams. Our DSL for Whitleigh Primary is Mr G Summerfield (Head Teacher) and for Sir John Hunt is Mr O Marner (Assistant Principal). The DSLs takes lead responsibility for child protection and wider safeguarding in their respective schools.

During term time, the DSL will be available during school hours for staff to discuss any safeguarding concerns.

Outside of school hours:

The DSL for Whitleigh Primary can be contacted by Email: [gavin.summerfield@whitleighprimary.co.uk](mailto:gavin.summerfield@whitleighprimary.co.uk)

The DSL for Sir John Hunt can be contacted by Email: [o.marner@sjhcsc.co.uk](mailto:o.marner@sjhcsc.co.uk)

When the DSL is absent, the deputies as outlined on page 3 of this document – will act as cover.

The DSL will be given the time, funding, training, resources and support to:

- › Provide advice and support to other staff on child welfare and child protection matters
- › Take part in strategy discussions and inter-agency meetings and/or support other staff to do so
- › Contribute to the assessment of children
- › Refer suspected cases, as appropriate, to the relevant body (local authority children's social care, Channel programme, Disclosure and Barring Service, and/or police), and support staff who make such referrals directly

The DSL will also keep the headteacher informed of any issues and liaise with local authority case managers and designated officers for child protection concerns as appropriate.

The full responsibilities of the DSL and deputies are set out in their job descriptions.

## 5.3 The governing board

The governing board will approve this policy at each review, ensure it complies with the law and hold the headteacher to account for its implementation.

The governing board will appoint a senior board level (or equivalent) lead link governor to monitor the effectiveness of this policy in conjunction with the full governing board. This is always a different person from the DSL.

The chair of governors will act as the 'case manager' in the event that an allegation of abuse is made against the headteacher, where appropriate (see appendix 3).

All governors will read Keeping Children Safe in Education.

Section 15 of this policy has information on how governors are supported to fulfil their role.

## 5.4 The headteacher

The headteacher is responsible for the implementation of this policy, including:

- › Ensuring that staff (including temporary staff) and volunteers are informed of our systems which support safeguarding, including this policy, as part of their induction
- › Communicating this policy to parents when their child joins the school and via the school website
- › Ensuring that the DSL has appropriate time, funding, training and resources, and that there is always adequate cover if the DSL is absent
- › Ensuring that all staff undertake appropriate safeguarding and child protection training and update this regularly
- › Acting as the 'case manager' in the event of an allegation of abuse made against another member of staff or volunteer, where appropriate (see appendix 3)
- › Ensuring the relevant staffing ratios are met, where applicable
- › Making sure each child in the Early Years Foundation Stage is assigned a key person

## 6. Confidentiality

Within the federation we take confidentiality extremely seriously. All personal information is stored securely and is only accessible to staff who are deemed to require access. When we share information outside of the schools, we ensure that we seek consent to do so from the owner of the data, or if we do not have consent we ensure that we have a legal basis for sharing, such as: child protection; the public task or a legal obligation to do so imposed upon us by the police or a court. We also note the Plymouth City Council guidance for sharing student records during transition or 'in year' movement.

We note that:

- › Timely information sharing is vital for the effective identification, assessment, and allocation of appropriate service provision, whether this is when problems first emerge, or where a child is already known to local authority children's social care.
- › Fears about sharing information must not be allowed to stand in the way of the need to promote the welfare, and protect the safety, of children
- › The Data Protection Act (DPA) 2018 and GDPR do not prevent, or limit, the sharing of information for the purposes of keeping children safe
- › If staff need to share 'special category personal data', the DPA 2018 contains 'safeguarding of children and individuals at risk' as a processing condition that allows practitioners to share information without consent if it is not possible to gain consent, it cannot be reasonably expected that a practitioner gains consent, or if to gain consent would place a child at risk
- › Staff should never promise a child that they will not tell anyone about a report of abuse, as this may not be in the child's best interests
- › The government's [information sharing advice for safeguarding practitioners](#) includes 7 'golden rules' for sharing information, and supports staff who have to make decisions about sharing information
- › If staff are in any doubt about sharing information, they should speak to the designated safeguarding lead (or deputy)
- › Confidentiality is also addressed in this policy with respect to record-keeping in section 14, and allegations of abuse against staff in appendix 3

## 7. Recognising abuse and taking action

Staff, volunteers and governors must follow the procedures set out below in the event of a safeguarding issue.

Please note – in this and subsequent sections, you should take any references to the DSL to mean "the DSL (or deputy DSL)".

## 7.1 If a child is suffering or likely to suffer harm, or in immediate danger

If you believe a child is suffering or likely to suffer from harm, or in immediate danger, speak to your DSL immediately they will take some details from you and if in agreement will make a referral to children's social care and/or the police. (Anyone can make a referral, but the DSL (or deputy) has more experience of following this process.) Tell the DSL (see section 5.2) as soon as possible if you make a referral directly.

Plymouth City Council now has one front door for referrals into the Gateway: this is by calling 01752 668000 and selecting option1 or by Emailing [gateway@plymouth.gov.uk](mailto:gateway@plymouth.gov.uk). The Gateway can give advice and support with safeguarding concerns and are also the referral point for specific referrals. The Plymouth Safeguarding Children Partnership (PSCP) provides guidance on their thresholds on their website <http://www.plymouthscb.co.uk/wp-content/uploads/2021/01/2016-09-16-FINAL-Threshold-Document-2016REVIEWED.docx.pdf> and a link to the Multi Agency Safeguarding Hub (MASH) referral form can be found here: <http://www.plymouthscb.co.uk/making-a-referral/>

## 7.2 If a child makes a disclosure to you

If a child discloses a safeguarding issue to you, you should:

- › Listen to and believe them. Allow them time to talk freely and do not ask leading questions
- › Stay calm and do not show that you are shocked or upset
- › Tell the child they have done the right thing in telling you. Do not tell them they should have told you sooner
- › Explain what will happen next and that you will have to pass this information on. Do not promise to keep it a secret
- › All staff should be able to reassure pupils that they are being taken seriously and that they will be supported and kept safe. A pupil should never be given the impression that they are creating a problem by reporting abuse, sexual violence or sexual harassment. Nor should a victim ever be made to feel ashamed for making a report (KCSIE, 2021)
- › Write up your conversation as soon as possible in the child's own words. Stick to the facts, and do not put your own judgement on it
- › Sign and date the write-up and pass it on to the DSL (Via CPOMS for primary school). Alternatively, if appropriate, make a referral to children's social care and/or the police directly (see 7.1), and tell the DSL as soon as possible that you have done so

## 7.3 If you discover that FGM has taken place or a pupil is at risk of FGM

The Department for Education's Keeping Children Safe in Education (2021) explains that FGM comprises "all procedures involving partial or total removal of the external female genitalia, or other injury to the female genital organs".

FGM is illegal in the UK and a form of child abuse with long-lasting, harmful consequences. It is also known as 'female genital cutting', 'circumcision' or 'initiation'.

Possible indicators that a pupil has already been subjected to FGM, and factors that suggest a pupil may be at risk, are set out in appendix 4.

**Any teacher** who discovers (either through disclosure by the victim or visual evidence) that an act of FGM appears to have been carried out on a **pupil under 18** must immediately report this to the police, personally. This is a statutory duty, and teachers will face disciplinary sanctions for failing to meet it.

Unless they have been specifically told not to disclose, they should also discuss the case with the DSL and involve children's social care as appropriate.

**Any other member of staff** who discovers that an act of FGM appears to have been carried out on a **pupil under 18** must speak to the DSL and follow our local safeguarding procedures.

The duty for teachers mentioned above does not apply in cases where a pupil is *at risk* of FGM or FGM is suspected but is not known to have been carried out. Staff should not examine pupils.

**Any member of staff** who suspects a pupil is *at risk* of FGM or suspects that FGM has been carried out or discovers that a pupil **aged 18 or over** appears to have been a victim of FGM must speak to the DSL and follow our local safeguarding procedures. They will contact Gateway as described in section 7.1 above.



## 7.4 If you have concerns about a child (as opposed to believing a child is suffering or likely to suffer from harm, or is in immediate danger)

Figure 1 on page 11 illustrates the procedure to follow if you have any concerns about a child's welfare.

Where possible, speak to the DSL first to agree a course of action.

If in exceptional circumstances the DSL is not available, this should not delay appropriate action being taken. Speak to a member of the senior leadership team and/or take advice from local authority children's social care. You can also seek advice at any time from the NSPCC helpline on 0808 800 5000. Share details of any actions you take with the DSL as soon as practically possible.

Make a referral to local authority children's social care directly, if appropriate (see 'Referral' below). Share any action taken with the DSL as soon as possible.

### Early help

If early help is appropriate, the DSL will generally lead on liaising with other agencies and setting up an interagency assessment as appropriate. Staff may be required to support other agencies and professionals in an early help assessment (EHA), in some cases acting as the lead practitioner.

The DSL will keep the case under constant review and the school will consider a referral to local authority children's social care if the situation does not seem to be improving. Timelines of interventions will be monitored and reviewed.

Details of Plymouth's policies and processes regarding Early Help and a copy of the Early Help Assessment Tool (EHAT) can be found on the appropriate page of the Plymouth Online Directory (POD)

<https://www.plymouthonlinedirectory.com/plymouthlocaloffer/ehat>

### Referral

If it is appropriate to refer the case to local authority children's social care or the police, the DSL will make the referral or support you to do so.

If you make a referral directly (see section 7.1), you must tell the DSL as soon as possible.

The local authority will make a decision within 1 working day of a referral about what course of action to take and will let the person who made the referral know the outcome. The DSL or person who made the referral must follow up with the local authority if this information is not made available, and ensure outcomes are properly recorded.

If the child's situation does not seem to be improving after the referral, the DSL or person who made the referral must follow local escalation procedures to ensure their concerns have been addressed and that the child's situation improves. This will normally be via the Plymouth Gateway as described in section 7.1 above.

## 7.5 If you have concerns about extremism

If a child is not suffering or likely to suffer from harm, or in immediate danger, where possible speak to the DSL first to agree a course of action.

If in exceptional circumstances the DSL is not available, this should not delay appropriate action being taken. Speak to a member of the senior leadership team and/or seek advice from local authority children's social care. Make a referral to local authority children's social care directly, if appropriate (see 'Referral' above). Inform the DSL or deputy as soon as practically possible after the referral.

Where there is a concern, the DSL will consider the level of risk and decide which agency to make a referral to. This could include [Channel](#), the government's programme for identifying and supporting individuals at risk of being drawn into terrorism, or the local authority children's social care team.

The Department for Education also has a dedicated telephone helpline, 020 7340 7264, which school staff and governors can call to raise concerns about extremism with respect to a pupil. You can also email [counter.extremism@education.gov.uk](mailto:counter.extremism@education.gov.uk). Note that this is not for use in emergency situations.

In an emergency, call 999 or the confidential anti-terrorist hotline on 0800 789 321 if you:

- Think someone is in immediate danger
- Think someone may be planning to travel to join an extremist group ➤
- See or hear something that may be terrorist-related

## 7.6 If you have a mental health concern

Mental health problems can, in some cases, be an indicator that a child has suffered or is at risk of suffering abuse, neglect or exploitation.

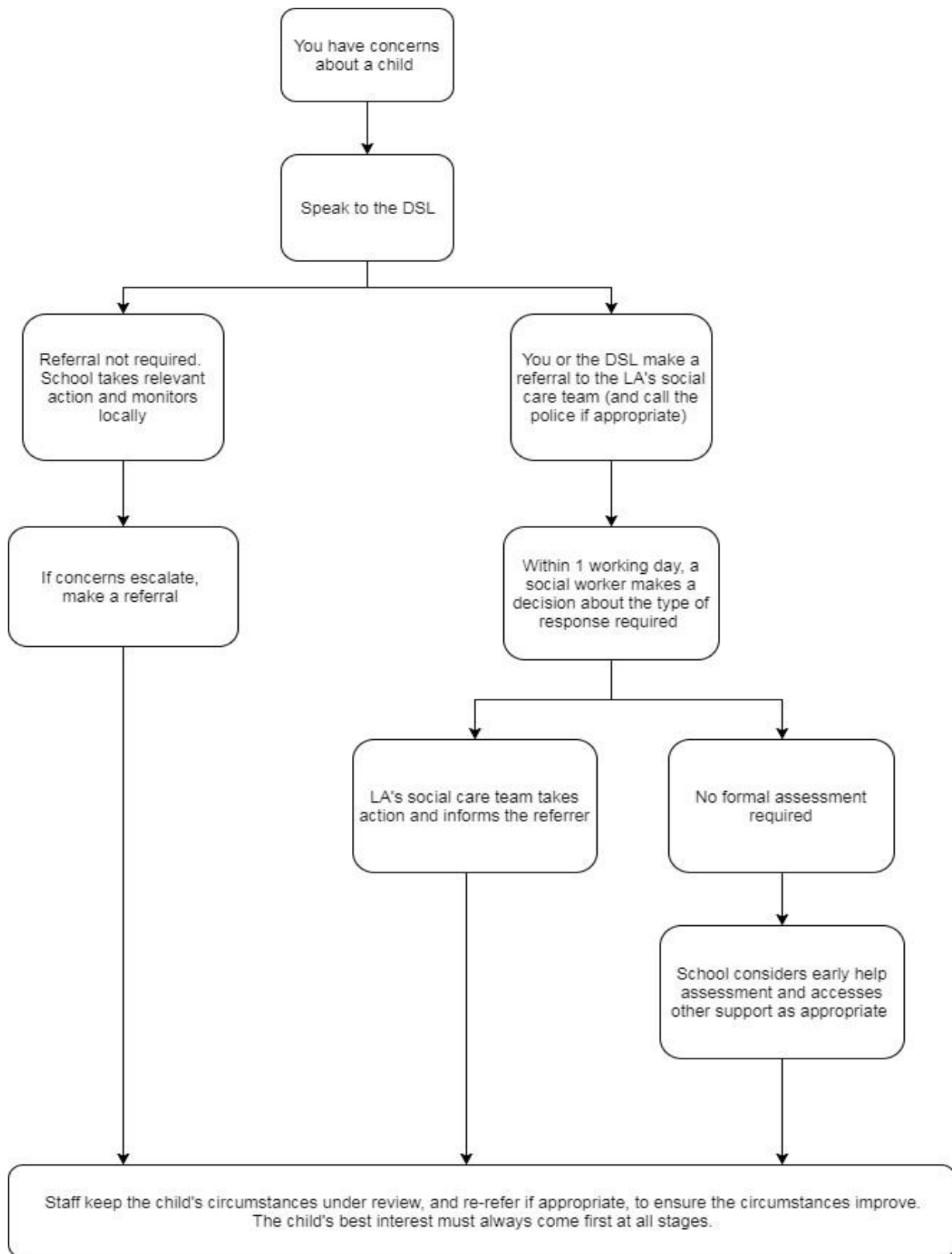
Staff will be alert to behavioural signs that suggest a child may be experiencing a mental health problem or be at risk of developing one.

If you have a mental health concern about a child that is also a safeguarding concern, take immediate action by following the steps in section 7.4.

If you have a mental health concern that is **not** also a safeguarding concern, speak to the DSL to agree a course of action. The DSL may seek support from the school educational psychologist (EP) or from health professionals such as the child's GP or Child and Adolescent Mental Health Support (CAMHS) team.

**Figure 1: procedure if you have concerns about a child’s welfare (as opposed to believing a child is suffering or likely to suffer from harm, or in immediate danger)**

(Note – if the DSL is unavailable, this should not delay action. See section 7.4 for what to do.)



**7.7 Concerns about a staff member, supply teacher or volunteer**

If you have concerns about a member of staff (including a supply teacher or volunteer), or an allegation is made about a member of staff (including a supply teacher or volunteer) posing a risk of harm to children, speak to the headteacher. If the concerns/allegations are about the headteacher, speak to the chair of governors.

The headteacher/chair of governors will then follow the procedures set out in appendix 3, if appropriate.

## 7.8 Allegations of abuse made against other pupils

We recognise that children are capable of abusing their peers. Abuse will never be tolerated or passed off as “banter”, “just having a laugh” or “part of growing up”.

We also recognise the gendered nature of peer-on-peer abuse. However, all peer-on-peer abuse is unacceptable and will be taken seriously. In KCSIE 2021 there are references to peer on peer abuse which have been widened to include abuse in intimate personal relationships between peers.

Most cases of pupils hurting other pupils will be dealt with under our school’s behaviour policy, but this child protection and safeguarding policy will apply to any allegations that raise safeguarding concerns. This might include where the alleged behaviour:

- Is serious, and potentially a criminal offence
- Could put pupils in the school at risk
- Is violent
- Involves pupils being forced to use drugs or alcohol
- Involves sexual exploitation, sexual abuse or sexual harassment, such as indecent exposure, sexual assault, up skirting or sexually inappropriate pictures or videos (including sexting) If a pupil makes an allegation of abuse against another pupil:

- You must record the allegation and tell the DSL, but do not investigate it
- The DSL will contact the local authority children’s social care team and follow its advice, as well as the police if the allegation involves a potential criminal offence
- The DSL will put a risk assessment and support plan into place for all children involved (including the victim(s), the child(ren) against whom the allegation has been made and any others affected) with a named person they can talk to if needed
- The DSL will contact the children and adolescent mental health services (CAMHS), if appropriate We

will minimise the risk of peer-on-peer abuse by:

- Challenging any form of derogatory or sexualised language or behaviour, including requesting or sending sexual images
- Being vigilant to issues that particularly affect different genders – for example, sexualised or aggressive touching or grabbing towards female pupils, and initiation or hazing type violence with respect to boys
- Ensuring our curriculum helps to educate pupils about appropriate behaviour and consent
- Ensuring pupils know they can talk to staff confidentially
- Ensuring staff are trained to understand that a pupil harming a peer could be a sign that the child is being abused themselves, and that this would fall under the scope of this policy

## 7.9 Sexting

### Your responsibilities when responding to an incident

If you are made aware of an incident involving sexting (also known as ‘youth produced sexual imagery’), you must report it to the DSL immediately.

You must **not**:

- View, download or share the imagery yourself, or ask a pupil to share or download it. If you have already viewed the imagery by accident, you must report this to the DSL
- Delete the imagery or ask the pupil to delete it
- Ask the pupil(s) who are involved in the incident to disclose information regarding the imagery (this is the DSL’s responsibility)
- Share information about the incident with other members of staff, the pupil(s) it involves or their, or other, parents and/or carers
- Say or do anything to blame or shame any young people involved

You should explain that you need to report the incident and reassure the pupil(s) that they will receive support and help from the DSL.

### **Initial review meeting**

Following a report of an incident, the DSL will hold an initial review meeting with appropriate school staff. This meeting will consider the initial evidence and aim to determine:

- Whether there is an immediate risk to pupil(s)
- If a referral needs to be made to the police and/or children's social care
- If it is necessary to view the imagery in order to safeguard the young person (in most cases, imagery should not be viewed)
- What further information is required to decide on the best response
- Whether the imagery has been shared widely and via what services and/or platforms (this may be unknown)
- Whether immediate action should be taken to delete or remove images from devices or online services
- Any relevant facts about the pupils involved which would influence risk assessment
- If there is a need to contact another school, college, setting or individual
- Whether to contact parents or carers of the pupils involved (in most cases parents should be involved)

The DSL will make an immediate referral to police and/or children's social care if:

- The incident involves an adult
- There is reason to believe that a young person has been coerced, blackmailed, or groomed, or if there are concerns about their capacity to consent (for example owing to special educational needs)
- What the DSL knows about the imagery suggests the content depicts sexual acts which are unusual for the young person's developmental stage, or are violent
- The imagery involves sexual acts and any pupil in the imagery is under 13
- The DSL has reason to believe a pupil is at immediate risk of harm owing to the sharing of the imagery (for example, the young person is presenting as suicidal or self-harming)

If none of the above apply then the DSL, in consultation with the headteacher and other members of staff as appropriate, may decide to respond to the incident without involving the police or children's social care.

### **Further review by the DSL**

If at the initial review stage, a decision has been made not to refer to police and/or children's social care, the DSL will conduct a further review.

They will hold interviews with the pupils involved (if appropriate) to establish the facts and assess the risks.

If at any point in the process there is a concern that a pupil has been harmed or is at risk of harm, a referral will be made to children's social care and/or the police immediately.

### **Informing parents**

The DSL will inform parents at an early stage and keep them involved in the process, unless there is a good reason to believe that involving them would put the pupil at risk of harm.

### **Referring to the police**

If it is necessary to refer an incident to the police, this will be done through telephoning 101 to talk through the incident and recording the incident log or contacting 101 online <https://www.police.uk/pu/contact-the-police/report-a-crime-incident/> with a brief outline of the incident so that an officer can get back to you.

### **Recording incidents**

All sexting incidents and the decisions made in responding to them will be recorded. The record-keeping arrangements set out in section 14 of this policy also apply to recording incidents of sexting.

### **Curriculum coverage**

Pupils are taught about the issues surrounding sexting as part of our PSHE education and computing programmes at an age-appropriate level. Teaching covers the following in relation to sexting with significantly

less emphasis for younger children and an increased emphasis when students begin to have private access to mobile devices.:

- What it is
- How it is most likely to be encountered
- The consequences of requesting, forwarding or providing such images, including when it is and is not abusive
- Issues of legality
- The risk of damage to people's feelings and reputation

Pupils also learn the strategies and skills needed to manage:

- Specific requests or pressure to provide (or forward) such images ➤
- The receipt of such images

We also share information on digital parenting and updates from CEOP with parents on a regular basis.

## 8. Notifying parents

Where appropriate, we will discuss any concerns about a child with the child's parents. The DSL will normally do this in the event of a suspicion or disclosure.

Other staff will only talk to parents about any such concerns following consultation with the DSL.

If we believe that notifying the parents would increase the risk to the child, we will discuss this with the local authority children's social care team before doing so.

In the case of allegations of abuse made against other children, we will normally notify the parents of all the children involved.

## 9. Pupils with special educational needs and disabilities

We recognise that pupils with special educational needs (SEN) and disabilities can face additional safeguarding challenges. Additional barriers can exist when recognising abuse and neglect in this group, including:

- Assumptions that indicators of possible abuse such as behaviour, mood and injury relate to the child's disability without further exploration
- Pupils being more prone to peer group isolation than other pupils
- The potential for pupils with SEN and disabilities being disproportionately impacted by behaviours such as bullying, without outwardly showing any signs
- Communication barriers and difficulties in overcoming these barriers

Our safeguarding and pastoral teams are aware of students with additional needs and our SENCOs are also DDSLs allowing us to provide any specific additional support that may be necessary.

## 10. Pupils with a social worker

Pupils may need a social worker due to safeguarding or welfare needs. We recognise that a child's experiences of adversity and trauma can leave them vulnerable to further harm as well as potentially creating barriers to attendance, learning, behaviour and mental health.

The DSL and all members of staff will work with and support social workers to help protect vulnerable children.

Where we are aware that a pupil has a social worker, the DSL will always consider this fact to ensure any decisions are made in the best interests of the pupil's safety, welfare and educational outcomes. For example, it will inform decisions about:

- Responding to unauthorised absence or missing education where there are known safeguarding risks ➤
- The provision of pastoral and/or academic support

## 11. Looked-after and previously looked-after children

We will ensure that staff have the skills, knowledge and understanding to keep looked-after children and previously looked-after children safe. In particular, we will ensure that:

- Appropriate staff have relevant information about children's looked after legal status, contact arrangements with birth parents or those with parental responsibility, and care arrangements
- The DSL has details of children's social workers and relevant virtual school heads

We have appointed designated teachers: for Whiteleigh Primary these are Mr Gavin Summerfield and Mrs Jo Burke and for Sir John Hunt it is Mr Oliver Marnier. Within their own schools they are responsible for promoting the educational achievement of looked-after children and previously looked-after children in line with [statutory guidance](#).

The designated teacher is appropriately trained and has the relevant qualifications and experience to perform the role.

As part of their role, the designated teacher will:

- Work closely with the DSL to ensure that any safeguarding concerns regarding looked-after and previously looked-after children are quickly and effectively responded to
- Work with virtual school heads to promote the educational achievement of looked-after and previously looked-after children, including discussing how pupil premium plus funding can be best used to support looked-after children and meet the needs identified in their personal education plans

## 12. Online Safety and computer use

### 12.1 Internet use

Within the federation, we believe that the use of the internet is integral to education, business and social interaction. Internet use is part of the statutory curriculum and a necessary tool for learning. The schools have a duty to provide students with quality internet access as part of their learning experience and internet access will be designed to enhance and extend education.

Students use the internet widely, both within and outside school, and need to learn how to evaluate Internet information and to take care of their own safety and security.

Within the federation students are safeguarded from potentially harmful and inappropriate online material. There is always clear guidance in lessons about which applications should be used by students and children are taught about online safety. Staff should guide students to on-line activities that will support the learning outcomes planned for the students' age and maturity. Students will be educated in the effective use of the Internet in research, including the skills of knowledge location, retrieval and evaluation. Students will be taught to be critically aware of the materials they read and shown how to validate information before accepting its accuracy.

Staff and students will be aware of the four areas of online risk and more information can be found in "Teaching online safety in school" (DfE guidance June 2012):

- content - being exposed to illegal, inappropriate or harmful content, for example: pornography, fake news, racism, misogyny, self-harm, suicide, anti-Semitism, radicalisation and extremism.
- contact - being subjected to harmful online interaction with other users; for example: peer to peer pressure, commercial advertising and adults posing as children or young adults with the intention to groom or exploit them for sexual, criminal, financial or other purposes'.
- conduct - personal online behaviour that increases the likelihood of, or causes, harm; for example, making, sending and receiving explicit images (e.g consensual and non-consensual sharing of nude and semi-nude and/or pornography, sharing other explicit images and online bullying; and
- commerce - risks such as online gambling, inappropriate advertising, phishing and or financial scams.

At Whiteleigh Primary and Sir John Hunt a review of online safety will be carried out annually using the free

online safety self-review on the 360 safe website <https://360safe.org.uk/>.

The school will maintain a current record of all staff and students who are granted access to the school's electronic communications. Parents and students will be asked to sign and return a consent form for pupil access as part of the Home School Agreement whereby they also agree to abide by the school rules in regard to online safety and appropriate internet usage.

When staff and students leave the school, their account and rights to specific school areas will be disabled.

## **12.2 Security of information systems**

Virus protection will be updated regularly. The security of the schools' information systems and users will be reviewed regularly as well as system capacity. Data will be backed up daily and regular archives taken and stored off-site.

Personal data will be recorded, processed, transferred and made available according to the Data Protection Act 1998, and the UK General Data Protection Regulation (UK GDPR).

## **12.3 Filtering and monitoring systems**

If staff or students discover unsuitable sites, the URL must be reported to The Network Manager.

Any material that the schools believe is illegal must be reported to appropriate agencies such as the Internet Watch Foundation or the Child Exploitation and Online Protection Centre. The schools' broadband access will include filtering appropriate to the age and maturity of students.

At Whitleigh Primary and Sir John Hunt, we have software in place at school to minimise access and highlight any person accessing inappropriate sites or information – At Sir John Hunt we use Smoothwall which filters and controls internet access : There is a system whereby key words trigger an email alert which is sent to the Safeguarding Designate, along with a screen shot of what the person was working on at the time the alert was sent. At Whitleigh Primary we use Net Sweeper which filters and controls internet access. The key word list is updated regularly in response to new technologies and new world threats, in line with the PREVENT strategy. This system covers all computers in the schools, including staff computers.

The school will take all reasonable precautions to ensure that users access only appropriate material. However, it is not possible to guarantee that access to unsuitable material will never occur via a school computer. The Federation can not accept liability for the material accessed, or any consequences resulting from Internet use.

As we increasingly work online, it is essential that children are safeguarded, and safeguard themselves, from potentially harmful and inappropriate online material. As such, we will ensure appropriate filters and appropriate monitoring systems are in place where we are able

## **12.4 Email**

Students may only use approved e-mail accounts in school – other personal accounts, such as yahoo, will be blocked under our filtering system. Students must immediately tell a teacher if they receive an offensive e-mail.

Students will be instructed that they must not reveal personal details about themselves or others in email communication or arrange to meet anyone without specific permission from an adult.

E-mails sent by staff to external organisations should be checked carefully before sending, in the same way as a letter written on school headed paper. Staff should only use school email accounts as approved by the Senior Leadership Team to communicate with students.



Use of inappropriate language in an email will be flagged up through our monitoring system and could result in the account being disabled and the information sent to the Network Manager who will evaluate an appropriate response.

## **12.5 Social networking, social media and personal publishing**

The school will block/filter access to social networking sites unless required for educational purposes. At Whiteleigh Primary students are not permitted to use their personal mobile technology on school site and at Sir John Hunt Students are not permitted to use their personal mobile technology during the College day (including breaks and lunch time).

As part of the RSHE Curriculum students will be advised to:

- never to give out personal details of any kind which may identify them. Examples would include real name, address, mobile or landline phone numbers, school attended, IM and e-mail addresses, full names of friends, specific interests and clubs etc.
- not to place personal photos on any social network space. They will be taught how public the information is and to consider using private areas. Advice should be given regarding background detail in a photograph which could identify the student or his/her location e.g. house number, street name or school.

Should a student/s choose to distribute images of other students which could be deemed inappropriate, they will be subject to appropriate sanctions. Should any photographs be distributed which are obscene or pornographic in nature, then the school will refer the case to the police and/or Social Services in addition to imposing appropriate sanctions.

Students should not use social networking (for example Twitter, Facebook, MSN Messenger, BBM) to make inappropriate or defamatory comments about members of staff. Should this happen then appropriate sanctions will be applied.

Students will be encouraged to invite known friends only and deny access to others.

Staff should not use social networks to discuss other members of staff or students. It would be considered an act of gross professional misconduct should a member of staff use a social networking site to bring the school into disrepute.

Staff should not accept friend invites or communications from students on social networking sites. It will be considered a disciplinary matter if staff befriend students or are not proactive in ensuring that the security of their online social networking sites is at the highest level.

## **12.6 Published content, Online platform, photographs and videos**

The Headteacher will take overall editorial responsibility for all published material and ensure that content is accurate and appropriate. The contact details on the website should be the school address, email and telephone number.

Staff or students' personal information must not be published.

Written permission from parents or carers will be obtained before images and videos of students are electronically published. This is in the form of opt-in consent when a student first joins in Year 7.

Images that include students will be selected carefully and will not include images of students if their parents or carers have not given their permission to do so.

Students' full names will not be used anywhere on the website, particularly in association with photographs and videos.

All videoconferencing equipment in the classroom must be switched off when not in use and not set to auto answer.

Video technology is sometimes used in the classroom to record lessons. The focus of this is to assist teacher development and the footage will only be used within the school and not distributed.

CCTV is installed on-site for security purposes and is used to assist with crime prevention and detection and disciplinary matters.

Access to CCTV is restricted to site staff, Pastoral Team and Senior Leadership Team. Footage in relation to a crime will be distributed when requested by police. All other footage will remain on site.

Whiteleigh Primary uses Google Classroom and Sir John Hunt uses Google Classroom as the online Learning Environment. SLT and staff will regularly monitor the usage of these by students and staff in all areas, in particular message and communication tools and publishing facilities.

## **12.7 Cyber bullying**

Cyber bullying, as with any form of bullying, will not be tolerated within the federation. Full details are set out in the schools' Anti-Bullying and conduct policies.

There are clear procedures in place to:

support anyone affected by cyber bullying;

investigate incidents or allegations of cyber bullying. Students, staff and parents/carers will be advised to keep a record of the bullying as evidence.

## **12.8 Introducing the policy to students, staff and parents**

All users will be informed that network and Internet use will be monitored. Safe and responsible use of the internet and technology will be reinforced across the curriculum. Particular attention will be given where students are considered to be vulnerable.

The Safeguarding policy will be formally provided to and discussed with all members of staff. Staff should be aware that Internet traffic can be monitored and traced to the individual user. Discretion and professional conduct is essential. Staff training in safe and responsible Internet use, both professionally and personally, will be provided through Safeguarding training.

Parents' attention will be drawn to the Schools' online safety approach in newsletters, the school prospectus and on the school website. A partnership approach with parents will be encouraged. This will include an annual invitation for parents to attend an evening about safe home Internet use and guidance in line with the government's PREVENT strategy.

## **13. Remote Learning**

Where Sir John Hunt staff are interacting online with children outside school they will follow the school safeguarding policies and procedures and the Staff Code of Conduct. We will follow the "Schools COVID-19

operational guidance (applies until Step 4)" (DfE guidance July 2021).

Sir John Hunt staff will make sure that parents/carers: are aware of the potential risks and the importance of staying safe online; know what the school is asking children to do online and who they will be interacting with from the school; and know where else they can go for support in keeping their child safe online.

The Headteacher will ensure that any use of online learning tools and systems is in line with privacy and data protection and GDPR requirements.

Group lessons and use of pre-recorded videos are acceptable, but must comply with the following criteria:

- Pre-recorded videos should be sent to groups only, no one-to-ones.
- Staff must wear suitable professional attire.
- Any computers used should be in appropriate areas, for example not in bedrooms.
- Pre-recorded videos should be kept to a reasonable length of time.
- Language must be professional and appropriate.
- Staff must only use platforms provided by Sir John Hunt to communicate with pupils.
- Staff must record the length, time, date and attendance of any sessions held.

## 14. Mobile phones and cameras

Staff are allowed to bring their personal phones to school for their own use but will limit such use to noncontact time when pupils are not present. Staff members' personal phones will remain in their bags or cupboards during contact time with pupils.

Staff will not take pictures or recordings of pupils on their personal phones or cameras.

We will follow the General Data Protection Regulation and Data Protection Act 2018 when taking and storing photos and recordings for use in the school.

**Within WCPS:** Designated 'mobile free' areas are situated within the setting, and are those routinely used by children.

'Mobile free' areas are those which are considered to be the most vulnerable and sensitive, and include:

- Classrooms
- Shared Facilities – Gym/Dance Studio/Hall/Dining Room/Sports Hall/Drama Room □ corridors
- playgrounds
- school field/MUGA
- Damerells Field
- changing areas
- toilets

A zero-tolerance policy is in place with regards to the **use** of personal or work-related mobiles by any individual in these areas.

Children will be permitted to bring a mobile phone into school only if absolutely necessary and a permission slip has been signed by their parents. The mobile phone will then be kept in the office.

**Within Sir John Hunt:** Students are permitted to carry mobile devices with them during the College day but these must be turned off and out of sight between the start of roll call and the end of the College day.

Parents, visitors and contractors are respectfully requested not to use their mobile phones in any of the designated mobile free areas. Should phone calls and/or texts need to be taken or made, use is restricted to those areas not accessed by children in order to avoid any unnecessary disturbance or disruption to others.

Under no circumstances is **any** individual permitted to take images or make recordings on a mobile phone. Any individual bringing a personal device into the setting must ensure that it contains no inappropriate or illegal content.

## 15. Complaints and concerns about school safeguarding policies

### 13.1 Complaints against staff

Complaints against staff that are likely to require a child protection investigation will be handled in accordance with our procedures for dealing with allegations of abuse made against staff (see appendix 3).

### 13.2 Other complaints

Our compliments, comments, concerns and complaints policy can be found [here](#)

Early years providers should take account of requirements related to complaints set out in the safeguarding and welfare section of the statutory framework for the Early Years Foundation Stage (paragraph 3.74).

### 13.3 Whistleblowing

For concerns regarding the way the schools safeguard pupils – including poor or unsafe practice, or potential failures, our whistleblowing policy can be found [here](#).

## 16. Record-keeping

We will hold records in line with our records retention schedule.

All safeguarding concerns, discussions, decisions made and the reasons for those decisions, must be recorded in writing. If you are in any doubt about whether to record something, discuss it with the DSL.

Non-confidential records will be easily accessible and available. Confidential information and records will be held securely and only available to those who have a right or professional need to see them.

Safeguarding records relating to individual children will be retained for a reasonable period of time after they have left the school.

If a child for whom the school has, or has had, safeguarding concerns moves to another school, the DSL will ensure that their child protection file is forwarded promptly and securely, and separately from the main pupil file. In addition, if the concerns are significant or complex, and/or social services are involved, the DSL will speak to the DSL of the receiving school and provide information to enable them to have time to make any necessary preparations to ensure the safety of the child.

At Whittleigh Primary/ Sir John Hunt we use CPOMS for holding information relating to safeguarding: this requires two factor authentications for named individuals to access students' records. Historic paper files that pre-date our implementation of CPOMS (or received from other schools outside of the CPOMS platform) are secured in locked filing cabinets. When a student leaves us and their records are not passed to another school we retain them up to the child's 25<sup>th</sup> birthday before they are destroyed. Electronic files become archived.

How we share student files (or partial files) is outlined in section 6 above.

In addition:

- Appendix 2 sets out our policy on record-keeping specifically with respect to recruitment and preemployment checks
- Appendix 3 sets out our policy on record-keeping with respect to allegations of abuse made against staff

## 17. Training

### 15.1 All staff

All staff members will undertake safeguarding and child protection training at induction, including on whistleblowing procedures, to ensure they understand the school's safeguarding systems and their

responsibilities, and can identify signs of possible abuse or neglect. This training will be regularly updated and will be in line with advice from the 3 safeguarding partners.

All staff will have training on the government's anti-radicalisation strategy, Prevent, to enable them to identify children at risk of being drawn into terrorism and to challenge extremist ideas.

Staff will also receive regular safeguarding and child protection updates (for example, through emails, ebulletins and staff meetings) as required, but at least annually.

Contractors who are provided through a private finance initiative (PFI) or similar contract will also receive safeguarding training.

Volunteers will receive appropriate training, if applicable.

## 15.2 The DSL and deputies

The DSL and deputies will undertake child protection and safeguarding training at least every 2 years.

In addition, they will update their knowledge and skills at regular intervals and at least annually (for example, through e-bulletins, meeting other DSLs, or taking time to read and digest safeguarding developments).

They will also undertake Prevent awareness training.

## 15.3 Governors

All governors receive training about safeguarding, to make sure they have the knowledge and information needed to perform their functions and understand their responsibilities.

As the chair of governors may be required to act as the 'case manager' in the event that an allegation of abuse is made against the headteacher, they receive training in managing allegations for this purpose.

## 15.4 Recruitment – interview panels

At least one person conducting any interview for a post at the school will have undertaken safer recruitment training. This will cover, as a minimum, the contents of the Department for Education's statutory guidance, Keeping Children Safe in Education, and will be in line with local safeguarding procedures.

## 15.5 Staff who have contact with pupils and families

All staff who have contact with children and families will have supervisions which will provide them with support, coaching and training, promote the interests of children and allow for confidential discussions of sensitive issues.

# 18. Monitoring arrangements

This policy will be reviewed **annually** by the DSLs of the federation and the nominated safeguarding governors. At every review, it will be approved by the full governing board.

# 19. Links with other policies

This policy links to the following policies and procedures:

- Acceptable use of IT and mobile devices policies
- Behaviour
- Conduct for Learning
- Staff code of conduct
- Compliments, comments, concerns and complaints
- Health and safety
- Attendance
- Online safety
- Equality
- Sex and relationship education

- First aid
- Whistle Blowing

**These appendices are based on the Department for Education’s statutory guidance, Keeping Children Safe in Education (2021).**

### Appendix 1: types of abuse

Abuse, including neglect, and safeguarding issues are rarely standalone events that can be covered by one definition or label. In most cases, multiple issues will overlap.

**Physical abuse** may involve hitting, shaking, throwing, poisoning, burning or scalding, drowning, suffocating or otherwise causing physical harm to a child. Physical harm may also be caused when a parent or carer fabricates the symptoms of, or deliberately induces, illness in a child.

**Emotional abuse** is the persistent emotional maltreatment of a child such as to cause severe and adverse effects on the child’s emotional development. Some level of emotional abuse is involved in all types of maltreatment of a child, although it may occur alone.

Emotional abuse may involve:

- Conveying to a child that they are worthless or unloved, inadequate, or valued only insofar as they meet the needs of another person
- Not giving the child opportunities to express their views, deliberately silencing them or ‘making fun’ of what they say or how they communicate
- Age or developmentally inappropriate expectations being imposed on children. These may include interactions that are beyond a child’s developmental capability, as well as overprotection and limitation of exploration and learning, or preventing the child participating in normal social interaction
- Seeing or hearing the ill-treatment of another
- Serious bullying (including cyberbullying), causing children frequently to feel frightened or in danger, or the exploitation or corruption of children

**Sexual abuse** involves forcing or enticing a child or young person to take part in sexual activities, not necessarily involving a high level of violence, whether or not the child is aware of what is happening. The activities may involve:

- Physical contact, including assault by penetration (for example rape or oral sex) or non-penetrative acts such as masturbation, kissing, rubbing and touching outside of clothing
- Non-contact activities, such as involving children in looking at, or in the production of, sexual images, watching sexual activities, encouraging children to behave in sexually inappropriate ways, or grooming a child in preparation for abuse (including via the internet)

Sexual abuse is not solely perpetrated by adult males. Women can also commit acts of sexual abuse, as can other children.

**Neglect** is the persistent failure to meet a child’s basic physical and/or psychological needs, likely to result in the serious impairment of the child’s health or development. Neglect may occur during pregnancy as a result of maternal substance abuse.

Once a child is born, neglect may involve a parent or carer failing to:

- Provide adequate food, clothing and shelter (including exclusion from home or abandonment)
  - Protect a child from physical and emotional harm or danger
  - Ensure adequate supervision (including the use of inadequate caregivers) ➤
- Ensure access to appropriate medical care or treatment

It may also include neglect of, or unresponsiveness to, a child’s basic emotional needs.

## Appendix 2: safer recruitment and DBS checks – policy and procedures

We will record all information on the checks carried out in the school's single central record (SCR). Copies of these checks, where appropriate, will be held in individuals' personnel files. We follow requirements and best practice in retaining copies of these checks, as set out below.

### New staff

When appointing new staff, we will:

- › Verify their identity
- › Obtain (via the applicant) an enhanced Disclosure and Barring Service (DBS) certificate, including barred list information for those who will be engaging in regulated activity (see definition below). We will not keep a copy of this for longer than 6 months
- › Obtain a separate barred list check if they will start work in regulated activity before the DBS certificate is available
- › Verify their mental and physical fitness to carry out their work responsibilities
- › Verify their right to work in the UK. We will keep a copy of this verification for the duration of the member of staff's employment and for 2 years afterwards
- › Verify their professional qualifications, as appropriate
- › Ensure they are not subject to a prohibition order if they are employed to be a teacher
- › Carry out further additional checks, as appropriate, on candidates who have lived or worked outside of the UK, including (where relevant) any teacher sanctions or restrictions imposed by a European Economic Area professional regulating authority, and criminal records checks or their equivalent

At Whitleigh Primary we will also ensure that appropriate checks are carried out to ensure that individuals are not disqualified under the 2018 Childcare Disqualification Regulations and Childcare Act 2006. Where we take a decision that an individual falls outside of the scope of these regulations and we do not carry out such checks, we will retain a record of our assessment on the individual's personnel file. This will include our evaluation of any risks and control measures put in place, and any advice sought.

We will ask for written information about previous employment history and check that information is not contradictory or incomplete.

We will seek references on all short-listed candidates, including internal candidates, before interview. We will scrutinise these and resolve any concerns before confirming appointments. The references requested will ask specific questions about the suitability of the applicant to work with children.

**Regulated activity** means a person who will be:

- › Responsible, on a regular basis in a school or college, for teaching, training, instructing, caring for or supervising children; or
- › Carrying out paid, or unsupervised unpaid, work regularly in a school or college where that work provides an opportunity for contact with children; or
- › Engaging in intimate or personal care or overnight activity, even if this happens only once and regardless of whether they are supervised or not

### Existing staff

If we have concerns about an existing member of staff's suitability to work with children, we will carry out all the relevant checks as if the individual was a new member of staff. We will also do this if an individual moves from a post that is not regulated activity to one that is.

We will refer to the DBS anyone who has harmed, or poses a risk of harm, to a child or vulnerable adult where:

- › We believe the individual has engaged in [relevant conduct](#); or
- › The individual has received a caution or conviction for a relevant offence, or there is reason to believe the individual has committed a listed relevant offence, under the [Safeguarding Vulnerable Groups Act 2006 \(Prescribed Criteria and Miscellaneous Provisions\) Regulations 2009](#); or

- The 'harm test' is satisfied in respect of the individual (i.e. they may harm a child or vulnerable adult or put them at risk of harm); and
- The individual has been removed from working in regulated activity (paid or unpaid) or would have been removed if they had not left

## Agency and third-party staff

We will obtain written notification from any agency or third-party organisation that it has carried out the necessary safer recruitment checks that we would otherwise perform. We will also check that the person presenting themselves for work is the same person on whom the checks have been made.

## Contractors

We will ensure that any contractor, or any employee of the contractor, who is to work at the school has had the appropriate level of DBS check (this includes contractors who are provided through PFI or similar contract). This will be:

- An enhanced DBS check with barred list information for contractors engaging in regulated activity
- An enhanced DBS check, not including barred list information, for all other contractors who are not in regulated activity but whose work provides them with an opportunity for regular contact with children We will obtain the DBS check for self-employed contractors.

We will not keep copies of such checks for longer than 6 months.

Contractors who have not had any checks will not be allowed to work unsupervised or engage in regulated activity under any circumstances.

We will check the identity of all contractors and their staff on arrival at the school.

Additionally, at Whiteleigh Primary, for self-employed contractors such as music teachers or sports coaches, we will ensure that appropriate checks are carried out to ensure that individuals are not disqualified under the 2018 Childcare Disqualification Regulations and Childcare Act 2006. Where we decide that an individual falls outside of the scope of these regulations and we do not carry out such checks, we will retain a record of our assessment. This will include our evaluation of any risks and control measures put in place, and any advice sought.

## Trainee/student teachers

Where applicants for initial teacher training are salaried by us, we will ensure that all necessary checks are carried out.

Where trainee teachers are fee-funded, we will obtain written confirmation from the training provider that necessary checks have been carried out and that the trainee has been judged by the provider to be suitable to work with children.

In both cases, this includes checks to ensure that individuals are not disqualified under the 2018 Childcare Disqualification Regulations and Childcare Act 2006.

## Volunteers

We will:

- Never leave an unchecked volunteer unsupervised or allow them to work in regulated activity
- Obtain an enhanced DBS check with barred list information for all volunteers who are new to working in regulated activity
- Carry out a risk assessment when deciding whether to seek an enhanced DBS check without barred list information for any volunteers not engaging in regulated activity. We will retain a record of this risk assessment

Additionally, at Whiteleigh Primary we will:

- Ensure that appropriate checks are carried out to ensure that individuals are not disqualified under the 2018 Childcare Disqualification Regulations and Childcare Act 2006. Where we decide that an individual falls outside of the scope of these regulations and we do not carry out such checks, we will retain a record of our assessment. This will include our evaluation of any risks and control measures put in place, and any advice sought



## **Governors**

All governors will have an enhanced DBS check without barred list information.

They will have an enhanced DBS check with barred list information if working in regulated activity.

All governors will also have a section 128 check (as a section 128 direction disqualifies an individual from being a maintained school governor).

## **Staff working in alternative provision settings**

Where we place a pupil with an alternative provision provider, we obtain written confirmation from the provider that they have carried out the appropriate safeguarding checks on individuals working there that we would otherwise perform.

## **Adults who supervise pupils on work experience**

When organising work experience, we will ensure that policies and procedures are in place to protect children from harm.

We will also consider whether it is necessary for barred list checks to be carried out on the individuals who supervise a pupil under 16 on work experience. This will depend on the specific circumstances of the work experience, including the nature of the supervision, the frequency of the activity being supervised, and whether the work is regulated activity.

## **Pupils staying with host families**

Where the school makes arrangements for pupils to be provided with care and accommodation by a host family to which they are not related (for example, during a foreign exchange visit), we will request enhanced DBS checks with barred list information on those people.

Where the school is organising such hosting arrangements overseas and host families cannot be checked in the same way, we will work with our partner schools abroad to ensure that similar assurances are undertaken prior to the visit.

## **Appendix 3: allegations of abuse made against staff**

This section of this policy applies to all cases in which it is alleged that a current member of staff, including a supply teacher or volunteer, has:

- Behaved in a way that has harmed a child, or may have harmed a child, or
- Possibly committed a criminal offence against or related to a child, or
- Behaved towards a child or children in a way that indicates he or she may pose a risk of harm to children, or
- Behaved or may have behaved in a way that indicates they may not be suitable to work with children

It applies regardless of whether the alleged abuse took place in the school. Allegations against a teacher who is no longer teaching and historical allegations of abuse will be referred to the police.

We will deal with any allegation of abuse against a member of staff or volunteer very quickly, in a fair and consistent way that provides effective child protection while also supporting the individual who is the subject of the allegation.

Our procedures for dealing with allegations will be applied with common sense and judgement.

## **Suspension of the accused until the case is resolved**

Suspension will not be the default position and will only be considered in cases where there is reason to suspect that a child or other children is/are at risk of harm, or the case is so serious that it might be grounds for dismissal. In such cases, we will only suspend an individual if we have considered all other options available and there is no reasonable alternative.

Based on an assessment of risk, we will consider alternatives such as:

- Redeployment within the school so that the individual does not have direct contact with the child or children concerned

- › Providing an assistant to be present when the individual has contact with children
- › Redeploying the individual to alternative work in the school so that they do not have unsupervised access to children
- › Moving the child or children to classes where they will not come into contact with the individual, making it clear that this is not a punishment and parents have been consulted
- › Temporarily redeploying the individual to another role in a different location, for example to an alternative school or other work for Plymouth City Council.

## Definitions for outcomes of allegation investigations

- › **Substantiated:** there is sufficient evidence to prove the allegation
- › **Malicious:** there is sufficient evidence to disprove the allegation and there has been a deliberate act to deceive
- › **False:** there is sufficient evidence to disprove the allegation
- › **Unsubstantiated:** there is insufficient evidence to either prove or disprove the allegation (this does not imply guilt or innocence)
- › **Unfounded:** to reflect cases where there is no evidence or proper basis which supports the allegation being made

## Procedure for dealing with allegations

In the event of an allegation that meets the criteria above, the headteacher (or chair of governors where the headteacher is the subject of the allegation) – the ‘case manager’ – will take the following steps:

- › Immediately discuss the allegation with the designated officer at the local authority. This is to consider the nature, content and context of the allegation and agree a course of action, including whether further enquiries are necessary to enable a decision on how to proceed, and whether it is necessary to involve the police and/or children’s social care services. (The case manager may, on occasion, consider it necessary to involve the police *before* consulting the designated officer – for example, if the accused individual is deemed to be an immediate risk to children or there is evidence of a possible criminal offence. In such cases, the case manager will notify the designated officer as soon as practicably possible after contacting the police)
- › Inform the accused individual of the concerns or allegations and likely course of action as soon as possible after speaking to the designated officer (and the police or children’s social care services, where necessary). Where the police and/or children’s social care services are involved, the case manager will only share such information with the individual as has been agreed with those agencies
- › Where appropriate (in the circumstances described above), carefully consider whether suspension of the individual from contact with children at the school is justified or whether alternative arrangements such as those outlined above can be put in place. Advice will be sought from the designated officer, police and/or children’s social care services, as appropriate
- › **If immediate suspension is considered necessary**, agree and record the rationale for this with the designated officer. The record will include information about the alternatives to suspension that have been considered, and why they were rejected. Written confirmation of the suspension will be provided to the individual facing the allegation or concern within 1 working day, and the individual will be given a named contact at the school and their contact details
- › **If it is decided that no further action is to be taken** in regard to the subject of the allegation or concern, record this decision and the justification for it and agree with the designated officer what information should be put in writing to the individual and by whom, as well as what action should follow both in respect of the individual and those who made the initial allegation
- › **If it is decided that further action is needed**, take steps as agreed with the designated officer to initiate the appropriate action in school and/or liaise with the police and/or children’s social care services as appropriate
- › Provide effective support for the individual facing the allegation or concern, including appointing a named representative to keep them informed of the progress of the case and considering what other support is appropriate.

- Inform the parents or carers of the child/children involved about the allegation as soon as possible if they do not already know (following agreement with children's social care services and/or the police, if applicable). The case manager will also inform the parents or carers of the requirement to maintain confidentiality about any allegations made against teachers (where this applies) while investigations are ongoing. Any parent or carer who wishes to have the confidentiality restrictions removed in respect of a teacher will be advised to seek legal advice
- Keep the parents or carers of the child/children involved informed of the progress of the case and the outcome, where there is not a criminal prosecution, including the outcome of any disciplinary process (in confidence)
- Make a referral to the DBS where it is thought that the individual facing the allegation or concern has engaged in conduct that harmed or is likely to harm a child, or if the individual otherwise poses a risk of harm to a child

We will inform Ofsted of any allegations of serious harm or abuse by any person living, working, or looking after children at the premises (whether the allegations relate to harm or abuse committed on the premises or elsewhere), and any action taken in respect of the allegations. This notification will be made as soon as reasonably possible and always within 14 days of the allegations being made.

If the school is made aware that the secretary of state has made an interim prohibition order in respect of an individual, we will immediately suspend that individual from teaching, pending the findings of the investigation by the Teaching Regulation Agency.

Where the police are involved, wherever possible the governing board will ask the police at the start of the investigation to obtain consent from the individuals involved to share their statements and evidence for use in the school's disciplinary process, should this be required at a later point.

### **Additional considerations for supply staff**

If there are concerns or an allegation is made against someone not directly employed by the school, such as supply staff provided by an agency, we will take the actions below in addition to our standard procedures.

- We will not decide to stop using a supply teacher due to safeguarding concerns without finding out the facts and liaising with our local authority designated officer to determine a suitable outcome
- The governing board will discuss with the agency whether it is appropriate to suspend the supply teacher, or redeploy them to another part of the school, while the school carries out the investigation
- We will involve the agency fully, but the school will take the lead in collecting the necessary information and providing it to the local authority designated officer as required
- We will address issues such as information sharing, to ensure any previous concerns or allegations known to the agency are taken into account (we will do this, for example, as part of the allegations management meeting or by liaising directly with the agency where necessary)

When using an agency, we will inform them of our process for managing allegations, and keep them updated about our policies as necessary, and will invite the agency's HR manager or equivalent to meetings as appropriate.

### **Timescales**

- Any cases where it is clear immediately that the allegation is unsubstantiated or malicious will be resolved within 1 week
- If the nature of an allegation does not require formal disciplinary action, we will institute appropriate action within 3 working days
- If a disciplinary hearing is required and can be held without further investigation, we will hold this within 15 working days

### **Specific actions**

#### **Action following a criminal investigation or prosecution**

The case manager will discuss with the local authority's designated officer whether any further action, including disciplinary action, is appropriate and, if so, how to proceed, taking into account information provided by the police and/or children's social care services.

## **Conclusion of a case where the allegation is substantiated**

If the allegation is substantiated and the individual is dismissed or the school ceases to use their services, or the individual resigns or otherwise ceases to provide their services, the case manager and the school's personnel adviser will discuss with the designated officer whether to make a referral to the DBS for consideration of whether inclusion on the barred lists is required. If they think that the individual has engaged in conduct that has harmed (or is likely to harm) a child, or if they think the person otherwise poses a risk of harm to a child, they must make a referral to the DBS.

If the individual concerned is a member of teaching staff, the case manager and personnel adviser will discuss with the designated officer whether to refer the matter to the Teaching Regulation Agency to consider prohibiting the individual from teaching.

## **Individuals returning to work after suspension**

If it is decided on the conclusion of a case that an individual who has been suspended can return to work, the case manager will consider how best to facilitate this.

The case manager will also consider how best to manage the individual's contact with the child or children who made the allegation if they are still attending the school.

## **Unsubstantiated or malicious allegations**

If an allegation is shown to be deliberately invented, or malicious, the headteacher, or other appropriate person in the case of an allegation against the headteacher, will consider whether any disciplinary action is appropriate against the pupil(s) who made it, or whether the police should be asked to consider whether action against those who made the allegation might be appropriate, even if they are not a pupil.

## **Confidentiality**

The school will make every effort to maintain confidentiality and guard against unwanted publicity while an allegation is being investigated or considered.

The case manager will take advice from the local authority's designated officer, police and children's social care services, as appropriate, to agree:

- Who needs to know about the allegation and what information can be shared
- How to manage speculation, leaks and gossip, including how to make parents or carers of a child/children involved aware of their obligations with respect to confidentiality
- What, if any, information can be reasonably given to the wider community to reduce speculation □ How to manage press interest if, and when, it arises

## **Record-keeping**

The case manager will maintain clear records about any case where the allegation or concern meets the criteria above and store them on the individual's confidential personnel file for the duration of the case. Such records will include:

- A clear and comprehensive summary of the allegation
- Details of how the allegation was followed up and resolved
- Notes of any action taken and decisions reached (and justification for these, as stated above)

If an allegation or concern is not found to have been malicious, the school will retain the records of the case on the individual's confidential personnel file and provide a copy to the individual.

Where records contain information about allegations of sexual abuse, we will preserve these for the Independent Inquiry into Child Sexual Abuse (IICSA), for the term of the inquiry. We will retain all other records at least until the individual has reached normal pension age, or for 10 years from the date of the allegation if that is longer.

The records of any allegation that is found to be malicious will be deleted from the individual's personnel file.

## **References**

When providing employer references, we will not refer to any allegation that has been proven to be false, unsubstantiated or malicious, or any history of allegations where all such allegations have been proven to be false, unsubstantiated or malicious.

## Learning lessons

After any cases where the allegations are *substantiated*, we will review the circumstances of the case with the local authority's designated officer to determine whether there are any improvements that we can make to the school's procedures or practice to help prevent similar events in the future.

This will include consideration of (as applicable):

- Issues arising from the decision to suspend the member of staff
- The duration of the suspension
- Whether or not the suspension was justified
- The use of suspension when the individual is subsequently reinstated. We will consider how future investigations of a similar nature could be carried out without suspending the individual

## Appendix 4: specific safeguarding issues

### Children missing from education

A child going missing from education, particularly repeatedly, can be a warning sign of a range of safeguarding issues. This might include abuse or neglect, such as sexual abuse or exploitation or child criminal exploitation, or issues such as mental health problems, substance abuse, radicalisation, FGM or forced marriage.

There are many circumstances where a child may become missing from education, but some children are particularly at risk. These include children who:

- Are at risk of harm or neglect
- Are at risk of forced marriage or FGM
- Come from Gypsy, Roma, or Traveler families
- Come from the families of service personnel
- Go missing or run away from home or care
- Are supervised by the youth justice system
- Cease to attend a school
- Come from new migrant families

We will follow our procedures for unauthorised absence and for dealing with children who go missing from education, particularly on repeat occasions, to help identify the risk of abuse and neglect, including sexual exploitation, and to help prevent the risks of going missing in future. This includes informing the local authority if a child leaves the school without a new school being named and adhering to requirements with respect to sharing information with the local authority, when applicable, when removing a child's name from the admission register at non-standard transition points.

Staff will be trained in signs to look out for and the individual triggers to be aware of when considering the risks of potential safeguarding concerns which may be related to being missing, such as travelling to conflict zones, FGM and forced marriage.

If a staff member suspects that a child is suffering from harm or neglect, we will follow local child protection procedures, including with respect to making reasonable enquiries. We will make an immediate referral to the local authority children's social care team, and the police, if the child is suffering or likely to suffer from harm, or in immediate danger.

### Child criminal exploitation

Child criminal exploitation (CCE) is a form of abuse where an individual or group takes advantage of an imbalance of power to coerce, control, manipulate or deceive a child into criminal activity, in exchange for something the victim needs or wants, and/or for the financial or other advantage of the perpetrator or facilitator, and/or through violence or the threat of violence.

The abuse can be perpetrated by males or females, and children or adults. It can be a one-off occurrence or a series of incidents over time and range from opportunistic to complex organised abuse.

The victim can be exploited even when the activity appears to be consensual. It does not always involve physical contact and can happen online. For example, young people may be forced to work in cannabis

factories, coerced into moving drugs or money across the country (county lines), forced to shoplift or pickpocket, or to threaten other young people.

Indicators of CCE can include a child:

- Appearing with unexplained gifts or new possessions
- Associating with other young people involved in exploitation
- Suffering from changes in emotional wellbeing
- Misusing drugs and alcohol
- Going missing for periods of time or regularly coming home late
- Regularly missing school or education
- Not taking part in education

If a member of staff suspects CCE, they will discuss this with the DSL. The DSL will trigger the local safeguarding procedures, including a referral to the local authority's children's social care team and the police, if appropriate.

## Child sexual exploitation

Child sexual exploitation (CSE) is a form of abuse where an individual or group takes advantage of an imbalance of power to coerce, manipulate or deceive a child into sexual activity, in exchange for something the victim needs or wants and/or for the financial advantage or increased status of the perpetrator or facilitator. It may, or may not, be accompanied by violence or threats of violence.

The abuse can be perpetrated by males or females, and children or adults. It can be a one-off occurrence or a series of incidents over time and range from opportunistic to complex organised abuse.

The victim can be exploited even when the activity appears to be consensual. Children or young people who are being sexually exploited may not understand that they are being abused. They often trust their abuser and may be tricked into believing they are in a loving, consensual relationship.

CSE can include both physical contact (penetrative and non-penetrative acts) and non-contact sexual activity. It can also happen online. For example, young people may be persuaded or forced to share sexually explicit images of themselves, have sexual conversations by text, or take part in sexual activities using a webcam. CSE may also occur without the victim's immediate knowledge, for example through others copying videos or images.

In addition to the CCE indicators above, indicators of CSE can include a child:

- Having an older boyfriend or girlfriend
- Suffering from sexually transmitted infections or becoming pregnant

If a member of staff suspects CSE, they will discuss this with the DSL. The DSL will trigger the local safeguarding procedures, including a referral to the local authority's children's social care team and the police, if appropriate.

## Sexual Violence and Sexual Harassment in Schools and Colleges.

Following Ofsted's review published in June 2021 it is imperative that staff are aware that sexual violence and sexual harassment can occur between two children of any age and sex from primary through to secondary stage and into colleges. It can occur through a group of children sexually assaulting or sexually harassing a single child or group of children. Sexual violence and sexual harassment exist on a continuum and may overlap; they can occur online and face to face (both physically and verbally) and are never acceptable. As set out in Part one of Keeping children safe in education (KCSIE), all staff working with children are advised to maintain an attitude of '**it could happen here**'.

There is a zero-tolerance approach to sexual violence and sexual harassment and it is never acceptable, and it will not be tolerated and it should never be passed off as "banter", "just having a laugh", "part of growing up" or "boys being boys". Challenging physical behaviour (potentially criminal in nature), such as grabbing bottoms, breasts and genitalia, pulling down trousers, flicking bras and lifting up skirts.

Dismissing or tolerating such behaviours risks normalising them; and • not recognising, acknowledging or understanding the scale of harassment and abuse and/or downplaying some behaviours related to abuse as it can lead to a culture of unacceptable behaviour, an unsafe environment and in worst case scenarios a culture that normalises abuse leading to children accepting it as normal and not coming forward to report it; and •

understanding that all of the above can be driven by wider societal factors beyond the school and college, such as everyday sexist stereotypes and everyday sexist language. This is why a whole school/college approach (especially preventative education) as described in Part 3 of this advice is important.

Staff need to be aware that children with Special Educational Needs and Disabilities (SEND) are three times more likely to be abused than their peers. Additional barriers can sometimes exist when recognising abuse in SEND children.

These can include:

- assumptions that indicators of possible abuse such as behaviour, mood and injury relate to the child's disability without further exploration;
- the potential for children with SEND being disproportionately impacted by behaviours such as bullying and harassment, without outwardly showing any signs; and
- communication barriers and difficulties overcoming these barriers.

When there has been a report of sexual violence, the designated safeguarding lead (or a deputy) should make an immediate risk and needs assessment.

Where there has been a report of sexual harassment, the need for a risk assessment should be considered on a case-by-case basis. The risk and needs assessment should consider:

- the victim, especially their protection and support;
- whether there may have been other victims,
- the alleged perpetrator(s); and
- all the other children (and, if appropriate, adult students and staff) at the school or college, especially any actions that are appropriate to protect them from the alleged perpetrator(s), or from future harms.

## **Domestic abuse**

Children can witness and be adversely affected by domestic abuse and/or violence at home where it occurs between family members. In some cases, a child may blame themselves for the abuse or may have had to leave the family home as a result.

Older children, at Sir John Hunt, may also experience domestic abuse and/or violence in their own personal relationships.

Exposure to domestic abuse and/or violence can have a serious, long-lasting emotional and psychological impact on children.

If police are called to an incident of domestic abuse and any children in the household have experienced the incident, the police will inform the key adult in school (usually the designated safeguarding lead) before the child or children arrive at school the following day. This is the procedure where police forces are part of [Operation Encompass](#).

The DSL will provide support according to the child's needs and update records about their circumstances.

## **Homelessness**

Being homeless or being at risk of becoming homeless presents a real risk to a child's welfare.

The DSL and deputies will be aware of contact details and referral routes into the local housing authority so they can raise/progress concerns at the earliest opportunity (where appropriate and in accordance with local procedures).

Where a child has been harmed or is at risk of harm, the DSL will also make a referral to children's social care.

## So-called ‘honour-based’ abuse (including FGM and forced marriage)

So-called ‘honour-based’ abuse (HBA) encompasses incidents or crimes committed to protect or defend the honour of the family and/or community, including FGM, forced marriage, and practices such as breast ironing.

Abuse committed in this context often involves a wider network of family or community pressure and can include multiple perpetrators.

All forms of HBA are abuse and will be handled and escalated as such. All staff will be alert to the possibility of a child being at risk of HBA or already having suffered it. If staff have a concern, they will speak to the DSL, who will activate local safeguarding procedures.

### FGM

The DSL will make sure that staff have access to appropriate training to equip them to be alert to children affected by FGM or at risk of FGM.

Section 7.3 of this policy sets out the procedures to be followed if a staff member discovers that an act of FGM appears to have been carried out or suspects that a pupil is at risk of FGM.

Indicators that FGM has already occurred include:

- A pupil confiding in a professional that FGM has taken place
- A mother/family member disclosing that FGM has been carried out
- A family/pupil already being known to social services in relation to other safeguarding issues ➤

A girl:

- Having difficulty walking, sitting or standing, or looking uncomfortable
- Finding it hard to sit still for long periods of time (where this was not a problem previously)
- Spending longer than normal in the bathroom or toilet due to difficulties urinating
- Having frequent urinary, menstrual or stomach problems
- Avoiding physical exercise or missing PE
- Being repeatedly absent from school, or absent for a prolonged period
- Demonstrating increased emotional and psychological needs – for example, withdrawal or depression, or significant change in behaviour
- Being reluctant to undergo any medical examinations
- Asking for help, but not being explicit about the problem
- Talking about pain or discomfort between her legs Potential signs that a pupil may be at risk of

FGM include:

- The girl’s family having a history of practising FGM (this is the biggest risk factor to consider)
- FGM being known to be practiced in the girl’s community or country of origin
- A parent or family member expressing concern that FGM may be carried out
- A family not engaging with professionals (health, education or other) or already being known to social care in relation to other safeguarding issues ➤ A girl:

- Having a mother, older sibling or cousin who has undergone FGM
- Having limited level of integration within UK society
- Confiding to a professional that she is to have a “special procedure” or to attend a special occasion to “become a woman”
- Talking about a long holiday to her country of origin or another country where the practice is prevalent, or parents stating that they or a relative will take the girl out of the country for a prolonged period
- Requesting help from a teacher or another adult because she is aware or suspects that she is at immediate risk of FGM
- Talking about FGM in conversation – for example, a girl may tell other children about it (although it is important to take into account the context of the discussion)



- Being unexpectedly absent from school
- Having sections missing from her 'red book' (child health record) and/or attending a travel clinic or equivalent for vaccinations/anti-malarial medication The above indicators and risk factors are not intended to be exhaustive.

### Forced marriage

Forcing a person into marriage is a crime. A forced marriage is one entered into without the full and free consent of one or both parties and where violence, threats, or any other form of coercion is used to cause a person to enter into a marriage. Threats can be physical or emotional and psychological.

Staff will receive training around forced marriage and the presenting symptoms. We are aware of the 'one chance' rule, i.e. we may only have one chance to speak to the potential victim and only one chance to save them.

If a member of staff suspects that a pupil is being forced into marriage, they will speak to the pupil about their concerns in a secure and private place. They will then report this to the DSL.

The DSL will:

- Speak to the pupil about the concerns in a secure and private place
- Activate the local safeguarding procedures and refer the case to the local authority's designated officer
- Seek advice from the Forced Marriage Unit on 020 7008 0151 or [fmf@fco.gov.uk](mailto:fmf@fco.gov.uk)
- Refer the pupil to an education welfare officer, pastoral tutor, learning mentor, or school counsellor, as appropriate

### Preventing radicalisation

➤ **Radicalisation** refers to the process by which a person comes to support terrorism and extremist ideologies associated with terrorist groups

➤ **Extremism** is vocal or active opposition to fundamental British values, such as democracy, the rule of law, individual liberty, and mutual respect and tolerance of different faiths and beliefs. This also includes calling for the death of members of the armed forces ➤ **Terrorism** is an action that:

- Endangers or causes serious violence to a person/people;
- Causes serious damage to property; or
- Seriously interferes or disrupts an electronic system

The use or threat of terrorism must be designed to influence the government or to intimidate the public and is made for the purpose of advancing a political, religious or ideological cause.

Schools have a duty to prevent children from being drawn into terrorism. The DSL will undertake Prevent awareness training and make sure that staff have access to appropriate training to equip them to identify children at risk.

We will assess the risk of children in our school being drawn into terrorism. This assessment will be based on an understanding of the potential risk in our local area, in collaboration with our local safeguarding partners and local police force.

We will ensure that suitable internet filtering is in place and equip our pupils to stay safe online at school and at home.

There is no single way of identifying an individual who is likely to be susceptible to an extremist ideology. Radicalisation can occur quickly or over a long period.

Staff will be alert to changes in pupils' behaviour.

The government website [Educate Against Hate](#) and charity [NSPCC](#) say that signs that a pupil is being radicalised can include:

- Refusal to engage with, or becoming abusive to, peers who are different from themselves
- Becoming susceptible to conspiracy theories and feelings of persecution
- Changes in friendship groups and appearance
- Rejecting activities they used to enjoy

- Converting to a new religion
- Isolating themselves from family and friends
- Talking as if from a scripted speech
- An unwillingness or inability to discuss their views
- A sudden disrespectful attitude towards others
- Increased levels of anger
- Increased secretiveness, especially around internet use
- Expressions of sympathy for extremist ideologies and groups, or justification of their actions
- Accessing extremist material online, including on Facebook or Twitter
- Possessing extremist literature
- Being in contact with extremist recruiters and joining, or seeking to join, extremist organisations

Children who are at risk of radicalisation may have low self-esteem or be victims of bullying or discrimination. It is important to note that these signs can also be part of normal teenage behaviour – staff should have confidence in their instincts and seek advice if something feels wrong.

If staff are concerned about a pupil, they will follow our procedures set out in section 7.5 of this policy, including discussing their concerns with the DSL.

Staff should **always** take action if they are worried.

Further information on the school's measures to prevent radicalisation are set out in other school policies and procedures, including our mobile device acceptable use policy, IT acceptable use policy, Personal Development Delivery Plan and our ICT school filtering systems.

## Checking the identity and suitability of visitors

All visitors will be required to verify their identity to the satisfaction of staff and to keep their belongings, including their mobile phone(s), in a safe place during their visit.

If the visitor is unknown to the setting, we will check their credentials and reason for visiting before allowing them to enter the setting. Professional visitors should be ready to produce identification.

Visitors are expected to sign the visitors' book and wear a visitor's badge.

Visitors to the school who are visiting for a professional purpose, such as educational psychologists and school improvement officers, will be asked to show photo ID and:

- Will be asked to show their DBS certificate, which will be checked alongside their photo ID; or
- The organisation sending the professional, such as the LA or educational psychology service, will provide prior written confirmation that an enhanced DBS check with barred list information has been carried out

All other visitors, including visiting speakers, will be accompanied by a member of staff at all times. We will not invite into the school any speaker who is known to disseminate extremist views and will carry out appropriate checks to ensure that any individual or organisation using school facilities is not seeking to disseminate extremist views or radicalise pupils or staff.

Visitors who have a DBS check and we have seen evidence that this is in place will have a visitor badge on a green lanyard: other visitors will have a red lanyard. All visitors with a red lanyard should be accompanied at all times.

## Non-collection of children

At Whitleigh Primary if a child is not collected at the end of the session/day, we will contact the parents or carers in order of preference on the MIS database. If they are still not collected, school will inform social care and make a referral.

At Sir John Hunt most students make their own way home. If a student returns to the College at the end of the day because an expected collection has not happened, then we will keep the child safe until we have been able to arrange alternative arrangements.

## Missing pupils

Our procedures are designed to ensure that a missing child is found and returned to effective supervision as soon as possible.

If a child goes missing from Whiteleigh Primary, we will:

### GUIDELINES IF A STUDENT GOES MISSING

While pupils are in school, we have a responsibility for duty of care to the students and act in loco-parentis by taking steps that are reasonable to ensure safety and well-being.

If a pupil goes missing out of school, the following steps should be taken:

- Gather other students together
- Allocate staff to search immediate area and alert local security.
- If a student is missing for more than 20 minutes, contact school to say which measures have been taken
- Ensure that there is good two-way communication established with a range of phone lines
- Notify the police / security.

If a pupil continues to go missing:

- Send other students accompanied by staff back to school (if possible), in bus, cabs asking school to send transport, and additional staff to help search.
- School to alert parents after 30-45 minutes and keep them posted
- School to alert Plymouth City Council Director for Schools and Educational Improvement (Ming Zhang)
- Set up link headquarters at school (i.e., Identify roles, rota for manning phones, making tea etc. preparing posters and alert transport police (bus and trains), taxi firms, local police, other police.
- Try to secure radio and TV help.

Ensure all staff are aware of these procedures.

- On outings, always take a school mobile phone leaving the number of the phone you have taken with the school office.
- Ensure that the school has the numbers of any other phones you have on the trip and make sure these are ON.
- Do not hesitate to alert school when there is a problem.
- 

If a pupil goes missing in school, the following steps should be taken:

- Let the main office / Headteacher know immediately.
- One member of staff must go to the roadside to search
- One member of staff must circumnavigate the grounds
- One member of staff must search all rooms inside
- Let all these people know when the student has been found
- If the student remains missing, school should alert parents after 30 – 45 minutes and keep them posted

Avoid any blame culture, celebrate the success of the mission when the student is found and learn from the investigation.

Head Teacher to evaluate what happened afterwards in order to learn from the situation and to satisfy ourselves that the best possible was done.

If a child goes missing from Sir John Hunt, we will conduct a search of the school to ensure that they are not hiding. We will then contact the parent to see if they are able to contact their child. If these measures are

unsuccessful, we will also contact the police to inform them of the situation and a possible MISPA. In addition, each morning after registration closes, we send a text message to all parents who have a child with an unexpected absence.